

# ENVISION NOLENSVILLE PIKE CONCEPT PLAN IMPLEMENTATION

## **METRO DOT PILOT COLLABORATIVE:**

MICHAEL BRIGGS, TRANSPORTATION PLANNER, METRO PLANNING DEPARTMENT

JONATHAN CLEGHON, INTERIM ENGINEERING DIRECTOR, METRO PUBLIC WORKS





# PURPOSE

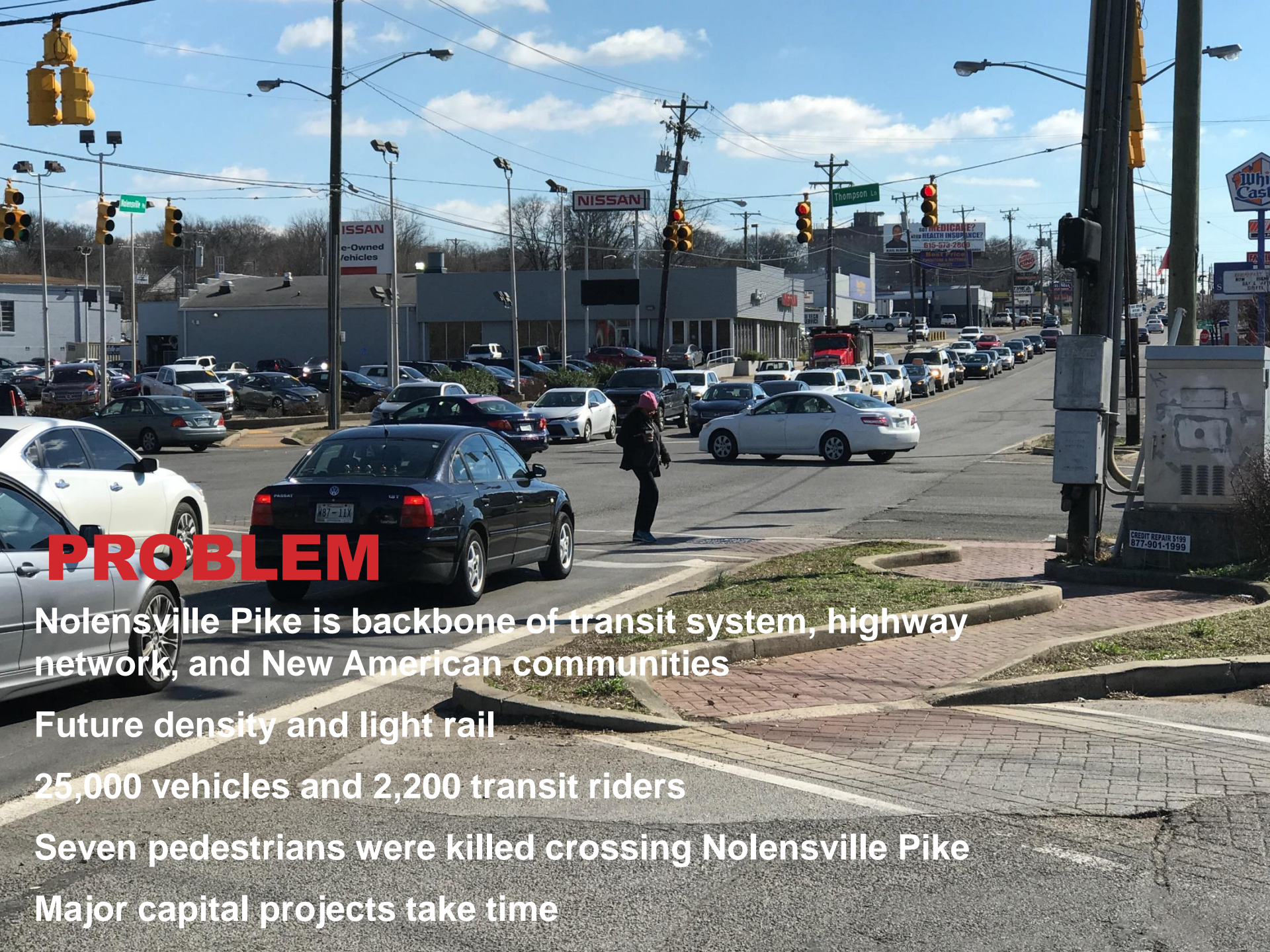
To pilot progressive, collaborative, multimodal transportation solutions along Nolensville Pike which will improve walking conditions and will create a sense of place.





**QUICK BUILD**





# PROBLEM

Nolensville Pike is backbone of transit system, highway network, and New American communities

Future density and light rail

25,000 vehicles and 2,200 transit riders

Seven pedestrians were killed crossing Nolensville Pike

Major capital projects take time















How does Nolensville  
Pike make you feel?

[illegible]

Why do you live  
study and work here?

What place  
in science  
What do you













HAVE A SEAT  
TOMA UN ASIENTO





**SOLUTION**

**Spark synergy around quick build**



**Conexión Américas  
Transportation for America  
Nashville Area MPO  
Nashville Civic Design Center**



**Metro Arts  
Metro Parks  
Metro Planning  
Metro Public Works  
Metro Transit Authority  
Nashville Public Library  
Office of Mayor Megan Barry**



**Oasis Center  
Walk Bike Nashville**



**Flatrock Coffee, Tea & More  
La Hacienda Taquería  
Nashville Zoo  
Salahadeen Center of Nashville  
Woodbine Neighborhood  
Association**



# COORDINATION EXAMPLE

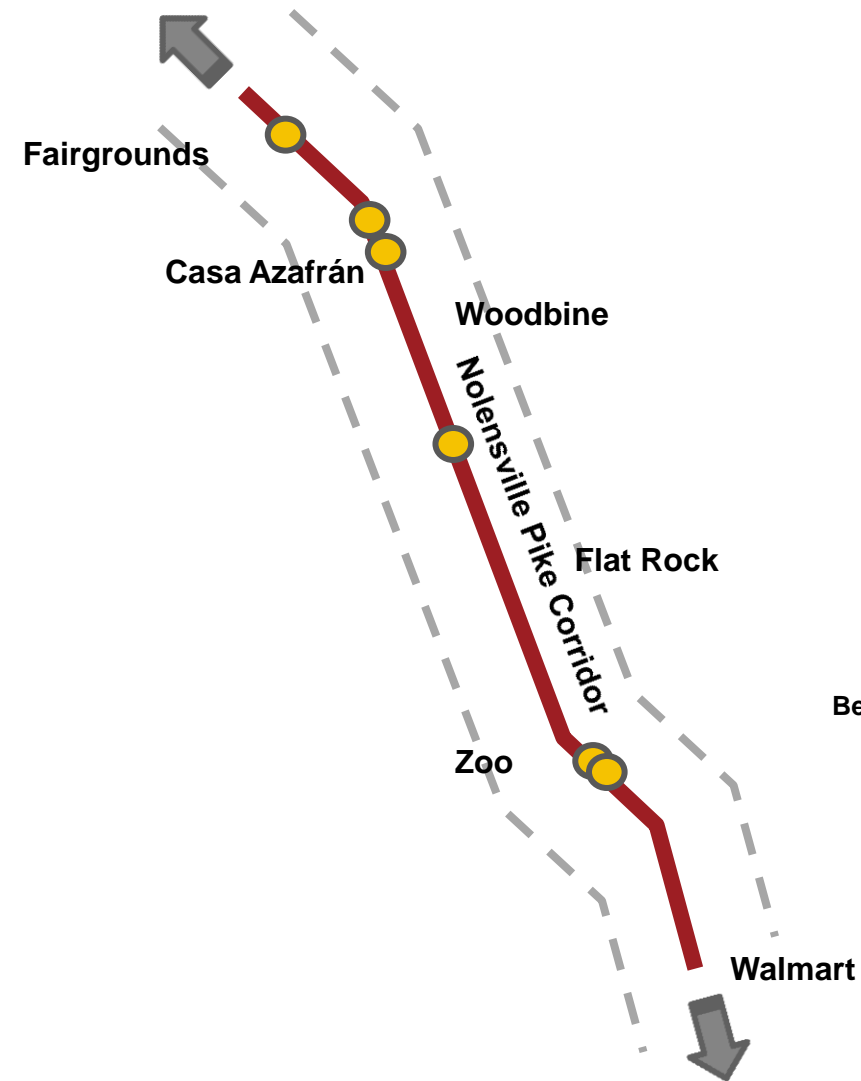
## Location: Glenrose Avenue



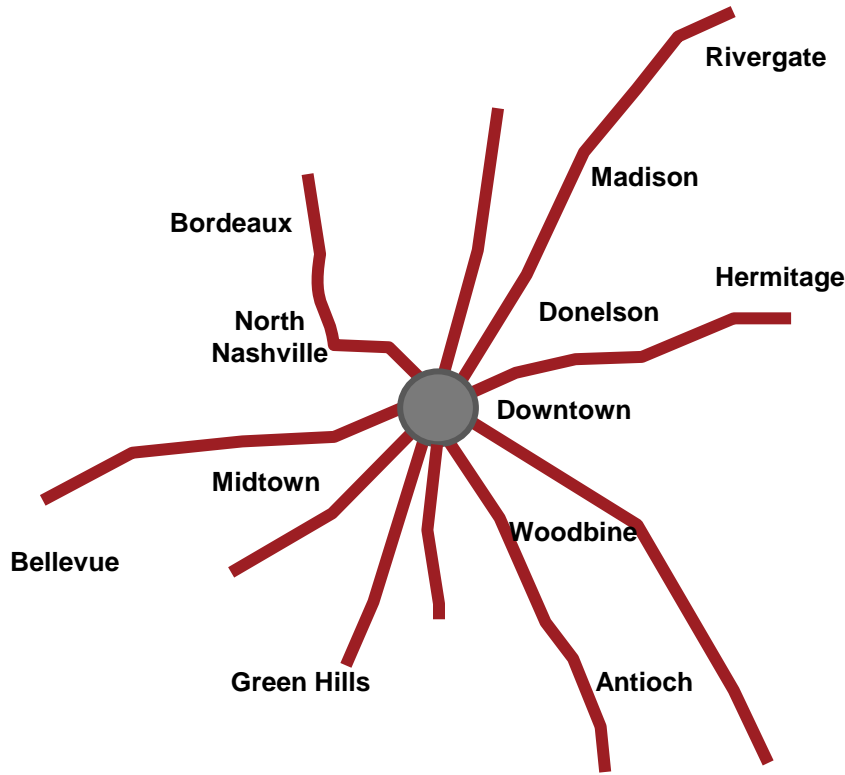
Solution	Quick Build	Arts	TDOT	Leverage Funds	Partners
Rebuild traffic signal	✓			\$	MPW
Add pedestrian countdown	✓			\$	MPW
Move signal cabinet	✓			\$	MPW
Add crosswalks across Nolensville	✓		✓	\$	MPW, TDOT,
Add crosswalk across Glenrose	✓	✓	✓	\$	MPW, Arts, Conexión Américas
Relocate bus stop to far side	✓	✓			Planning, MTA, MPW, Arts, Conexión Américas
Consolidate driveway					Planning, MPW, Private Property
Install ADA compliant ramps	✓			\$	MPW
Narrow traffic lanes			✓	\$	MPW, TDOT
Update multilingual signs	✓			\$	MPW, Conexión Américas



# SIZE OF IMPACT



## Nashville's Pikes





# PROPOSAL

Model Metro DOT work

Coordinate with TDOT

Performance metrics

Add placemaking & pilot projects



# **BUSINESS CASE**

**REQUEST: \$1 million**

**Engineering design**

**Pre & post assessment metrics**

**Supplement implementation gaps**

**Model guidebook**

**LEVERAGE: \$350,000 + staff time**

**Completed concepts**

**Artist stipends (pending)**

**Percent for arts fund**



# RETURN ON INVESTMENT

A comfortable walking environment promotes walking.

A vibrant place stimulates the local economy.



Source: CBS Chicago

# TEAM



## DOT COLLABORATIVE



## CHAMPIONS



# TIMELINE

2017 July

Steering Committee meetings continue.  
Consult with TDOT early and often.

Sept

Engineering design with placemaking elements.  
Pre-assessment metrics performed.

Nov

Implement projects.

2018 Jan

Mar

Post-assessment metrics performed.

Assess designs and tweak if necessary.

May

Develop recommendations to institutionalize.

July

Produce model guidebook.



# **SUSTAINABILITY PLAN**

**Public Works & MTA maintain engineering components**

**Metro Arts & Conexión Américas support placemaking  
maintenance agreements**

**Model future maintenance**



& ways  
from one side of  
Nolensville to  
the other

Cultural celebrations  
and traditions

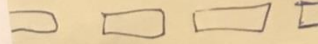
Trolley up?  
down Nolensville  
Rd.

Less car centric  
more pedestrian  
(separate from cars)  
more bike  
friendly  
mass transit!

Bus  
Stop to  
Grocery  
along Thompson

grassy  
medians  
and  
Flower Beds

Grassy  
medians  
w/turning open



SCULPTURE

MURALS  
THAT REFLECT  
OUR CORRIDOR

Cross walks  
better  
Seating at  
bus stop

Y Tambie Consider  
ar que al hacer  
mas casas, edificios,  
condos etc. Nuestro  
gobierno Tiene

\*more sidewalks  
and completed  
sidewalks on  
Joyner Ave.  
- issues w/ cars  
driving too fast on  
this street. :-

Signage &  
Graphics that

or dedicated  
bus lane  
with  
Nolensville + Nolensville  
and  
Nolensville