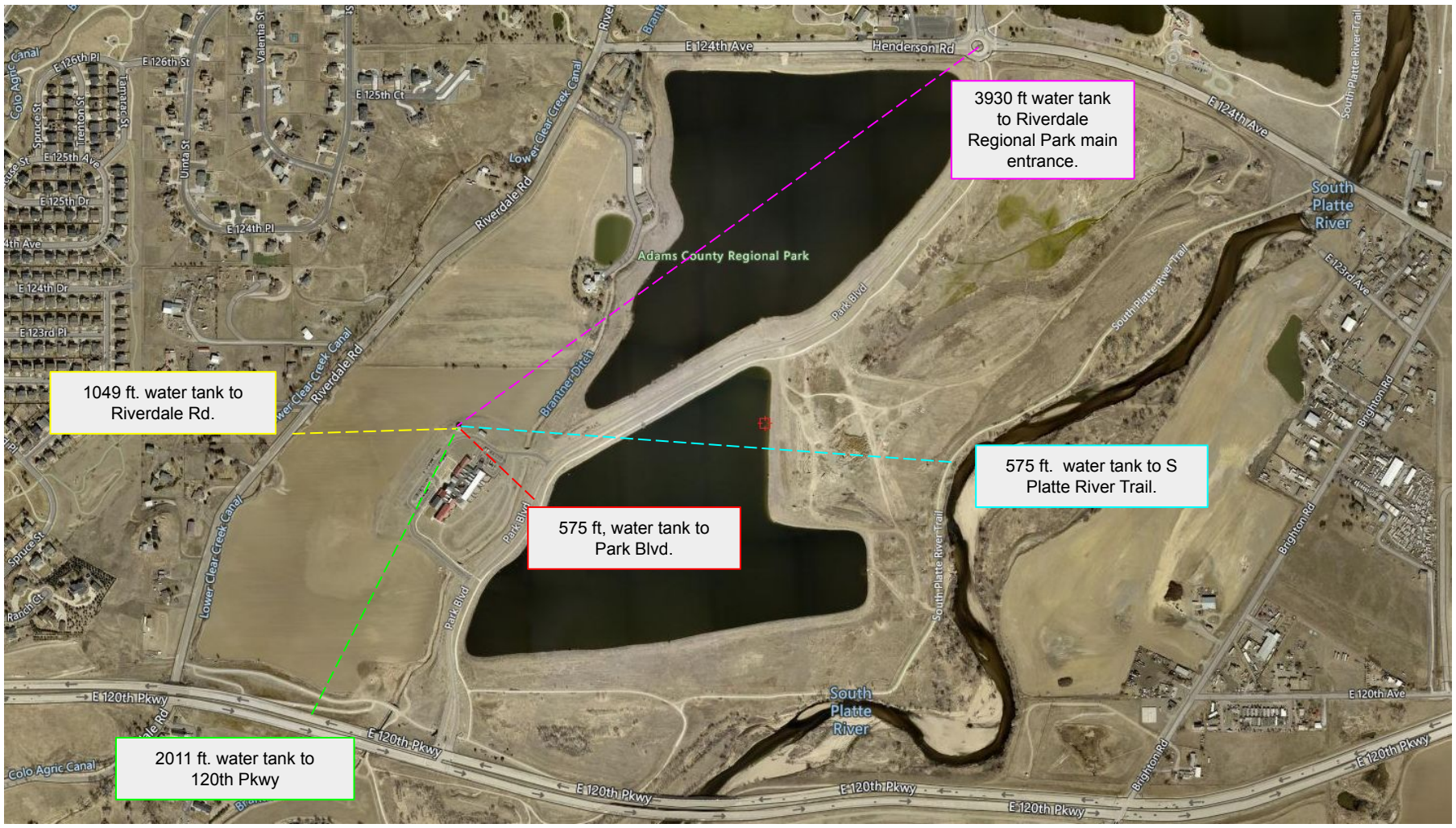




Riverdale Regional Park Water Tank
[12155 Park Blvd, Brighton, CO 80601](https://www.brightonco.gov/12155-Park-Blvd-Brighton-CO-80601)



3930 ft water tank to Riverdale Regional Park main entrance.

1049 ft. water tank to Riverdale Rd.

575 ft, water tank to Park Blvd.

575 ft. water tank to S Platte River Trail.

2011 ft. water tank to 120th Pkwy

Water Tank Specs

- Height: 26'
- Circumference: 103'
- Exterior Material: textured steel coated with [Trico EP Bond](#).
- Primer: TBD, applied by a paint vendor contracted by Adams County
- Sealant: TBD, applied by a paint vendor contracted by Adams County

Material Considerations

The mural site is a functioning water tank. The Selected artist will work closely with a paint vendor contracted by Adams County to ensure that mural artwork materials are compatible with siren functionality, primer, and sealant.



